

Standard Script Package Guide

For 731X Lector-Scriptor

Packages:

- Standard Script Package (CDMA2000-EV-DO) V6.00.pcf
- Standard Script Package (GSM-WCDMA) V6.00.pcf
- Standard Script Package (TETRA) V6.00.pcf

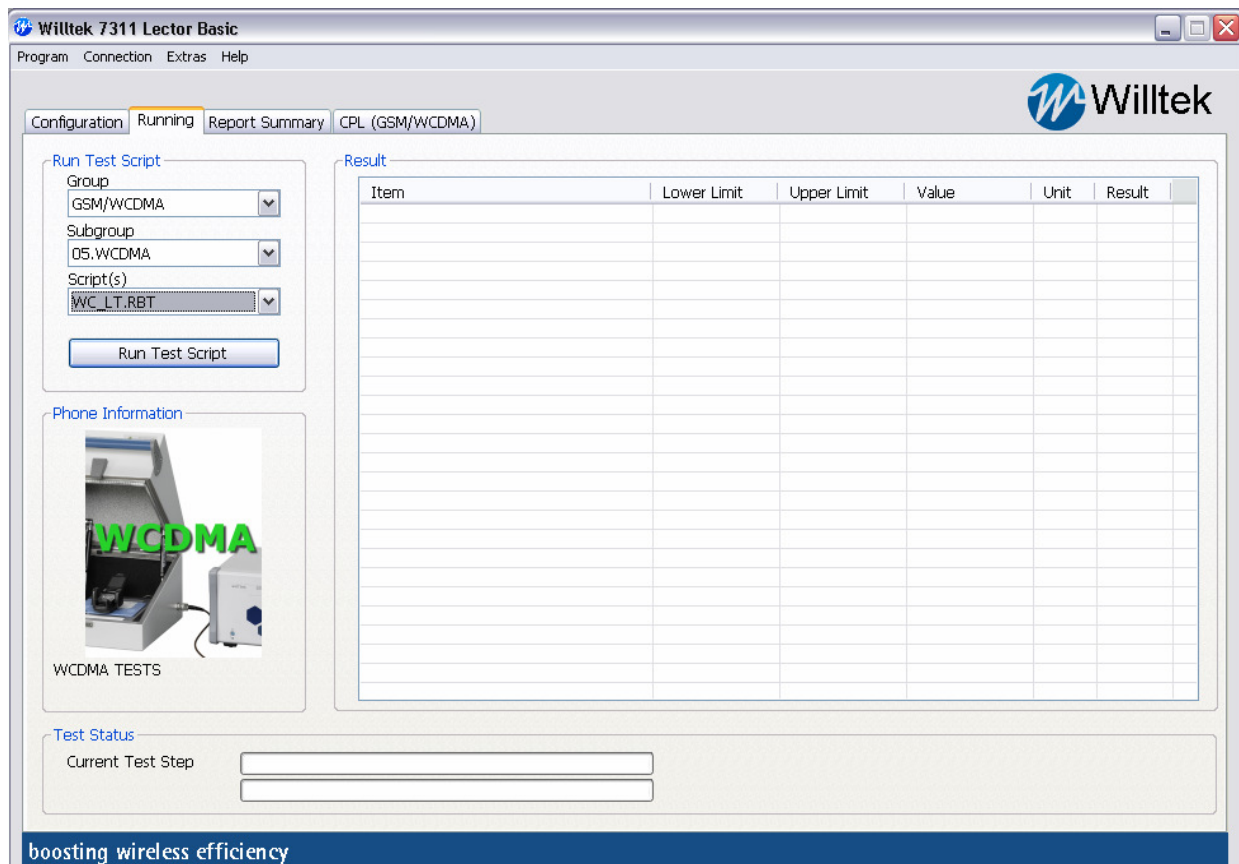


Table of Contents

Introduction	3
1 Changes Standard Script Package (GSM-WCDMA) V6.00.pcf.....	3
1.1 Overwritten Files	3
1.2 New Files.....	4
2 Changes for Standard Script Package (CDMA2000-EV-DO) V6.00.pcf.....	4
2.1 Overwritten Files	4
2.2 New Files.....	5
3 Changes for Standard Script Package (TETRA) V6.00.pcf	5
3.1 Overwritten Files	5
3.2 New Files.....	5
4 Importing a script package.....	6
5 Activating / Deactivating existing packages	8
6 Deleting existing packages	9

Revision	Author	Comments	Date
2.0	S.Spintzyk	Initial document	11.09.2007
4.00	S.Spintzyk	New WCDMA and CDMA scripts added	10.04.2008
6.00	S.Spintzyk	HSDPA and CDMA scripts added, TETRA script package added	21.09.2009

Introduction

This document describes step by step how to import the Standard Script Package into 7310 Lector-Scriptor.

A script package is defined as .pcf file and contains all the necessary data to implement and run additional scripts.

1 Changes Standard Script Package (GSM-WCDMA) V6.00.pcf

For the GSM/WCDMA group, new subgroups, pictures and scripts have been defined. The following changes are included in the package.

1.1 Overwritten Files

All settings for the group (GSM; WCDMA), subgroups and linked test scripts are overwritten.

GSM Single-Band:

GS_S90.rbt
GS_S18.rbt
GS_S19.rbt
GS_S85.RBT

GSM Dual-Band:

GS_D9018.rbt
GS_D8519.rbt

GSM Tri-Band:

GS_T901819.rbt
GS_T851918.rbt

GSM Quad-Band

GS_Q.rbt

WCDMA:

WC_ST.rbt
WC_LT.rbt
WC2_ST.rbt
WC2_LT.rbt
WC5_ST.rbt
WC5_LT.rbt
WC25_ST.rbt
WC25_LT.rbt
WC125_ST.rbt
WC125_LT.rbt

WCDMA; HSDPA:

WH_ST.rbt

WCDMA; GSM:

WG_D9018_ST.rbt
WG_D9018_LT.rbt
WG_T901819_ST.rbt
W25G_D8519_ST.rbt
W25G_D8519_LT.rbt
W125G_Q_ST.rbt

WCDMA; GSM; EDGE:

WGE_D9018_ST.rbt
WGE_D9018_LT.rbt
W25GE_D8519_ST.rbt
W25GE_D8519_LT.rbt
W125GE_Q_ST.rbt
W125GE_Q_LT.rbt

WCDMA; GSM; HSDPA:

WGH_D9018_ST.rbt

GSM; EDGE:

GE_D9018.rbt
GE_D8519.rbt
GE_D9018.rbt

GPRS:

GP_S90.rbt
GP_S18.rbt
GP_S85.rbt
GP_S19.rbt
GP_D9018.rbt
GP_D8519.rbt
GP_D9018.rbt

TAC2TEST:

TAC2TEST.X2T

1.2 New Files

HSDPA:
HS_LT.rbt

WCDMA; HSDPA:
WH_LT.rb

2 Changes for Standard Script Package (CDMA2000-EV-DO) V6.00.pcf

For the CDMA2000/ EV-DO group, subgroups and scripts have been defined.

2.1 Overwritten Files

All settings for the group (CDMA2000; EV-DO), subgroups and linked test scripts are overwritten.

CDMA-DUAL:
C2_DUAL_ST.rbt
C2_DUAL_LT.rbt

CDMA-US800:
C2_US800_ST.rbt
C2_US800_LT.rbt

CDMA-USPCS:
C2_USPCS_ST.rbt
C2_USPCS_LT.rbt

CDMA-KOREAN:
C2_KPCS_ST.rbt
C2_KPCS_LT.rbt

CDMA-NMT450:
C2_450_ST.rbt,
C2_450_LT.rbt

EVDO+ CDMA:
EVC2_DUAL_ST.rbt
EVC2_DUAL_LT.rbt

EVC2_US800_ST.rbt
EVC2_US800_LT.rbt
EVC2_USPCS_ST.rbt
EVC2_USPCS_LT.rbt
EVC2_KPCS_ST.rbt
EVC2_KPCS_LT.rbt
EVC2_450_ST.rbt
EVC2_450_LT.rbt

EVDO:
EV_DUAL_ST.rbt
EV_DUAL_LT.rbt
EV_US800_ST.rbt
EV_US800_LT.rbt
EV_USPCS_ST.rbt
EV_USPCS_LT.rbt
EV_KPCS_ST.rbt
EV_KPCS_LT.rbt
EV_450_ST.rbt
EV_450_LT.rbt

MEID2TEST:
MEID2TEST.X2T

2.2 New Files

CDMA-TRI:

C2_TRI_ST.rbt
C2_TRI_LT.rbt

EVDO+ CDMA:

EVC2_TRI_ST.rbt
EVC2_TRI_LT.rbt
EVC2_AWS_ST.rbt
EVC2_AWS_LT.rbt

CDMA-AWS:

C2_AWS_ST.rbt
C2_AWS_LT.rbt

EVDO+ CDMA:

EV_TRI_ST.rbt
EV_TRI_LT.rbt
EV_AWS_ST.rbt
EV_AWS_LT.rbt

3 Changes for Standard Script Package (TETRA) V6.00.pcf

The Standard Script Package for TETRA was added.

3.1 Overwritten Files

EXAMPLE:

TETRA_TMO_4.rbt
TETRA_TTM_BER.rbt

3.2 New Files

EXAMPLE:

TETRA_TMO_ST.rbt
TETRA_TMO_LT.rbt
TETRA_TTM_MER.rbt

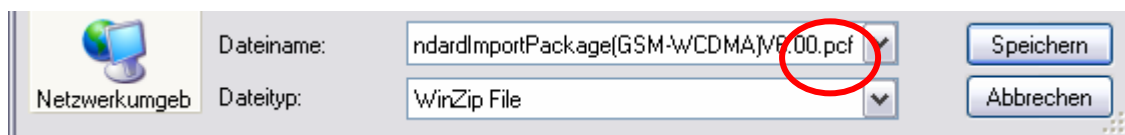
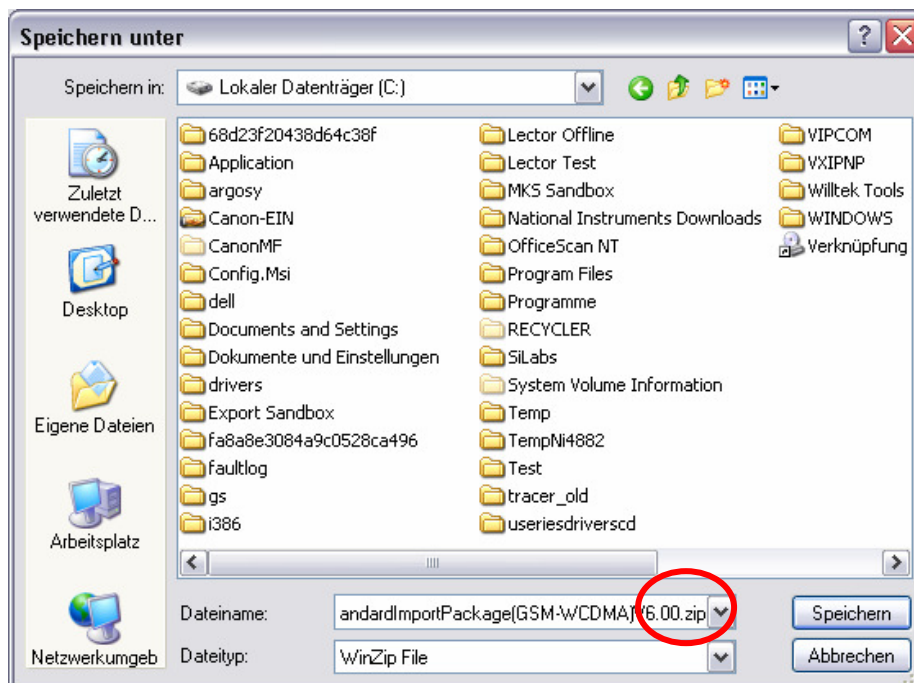
4 Importing a script package

Download the Standard Script Package and save it to a location on your hard disk.

Note:

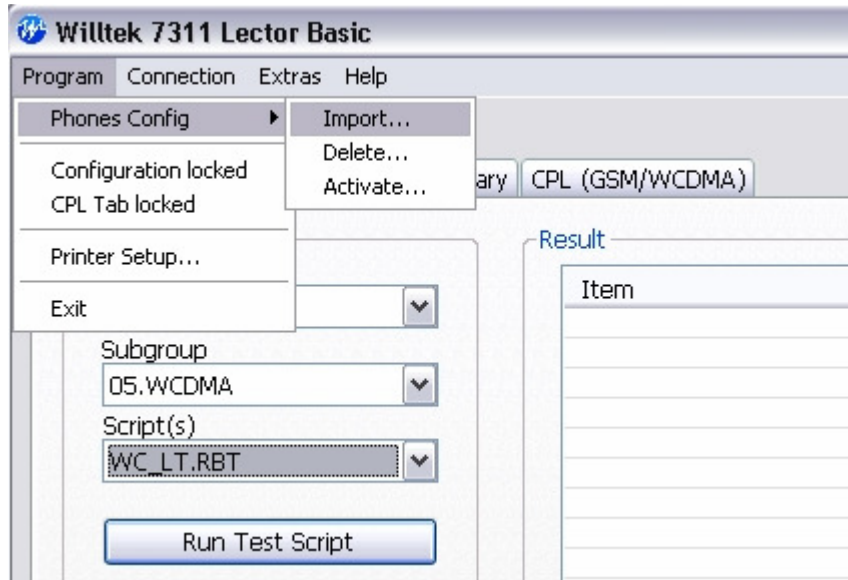
Please make sure that the browser did not change the ending during the download process.

If this happened please change the ending of the file to “pcf”

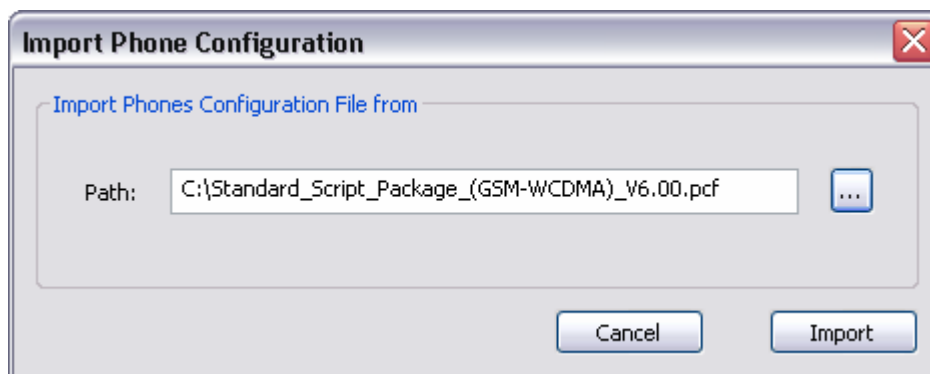


Start the Lector and select the following menu item:

Program >> Phones Config. >> Import



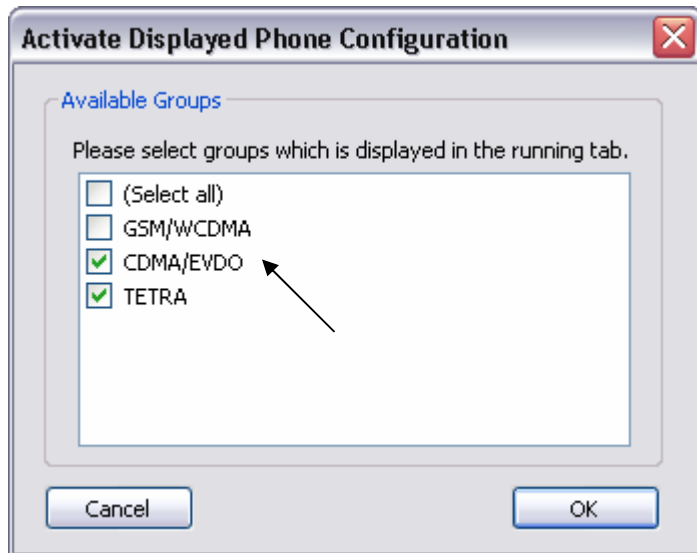
Select the path where the script package (*.pcf file) is located and press the “Import” button.



Note:

Please read the warning message carefully which appears during the overwrite process of an existing group.

Activate the new group (included in the package) - if not happened already - by enabling the check box and press the “OK” button. Other groups can also be deactivated.

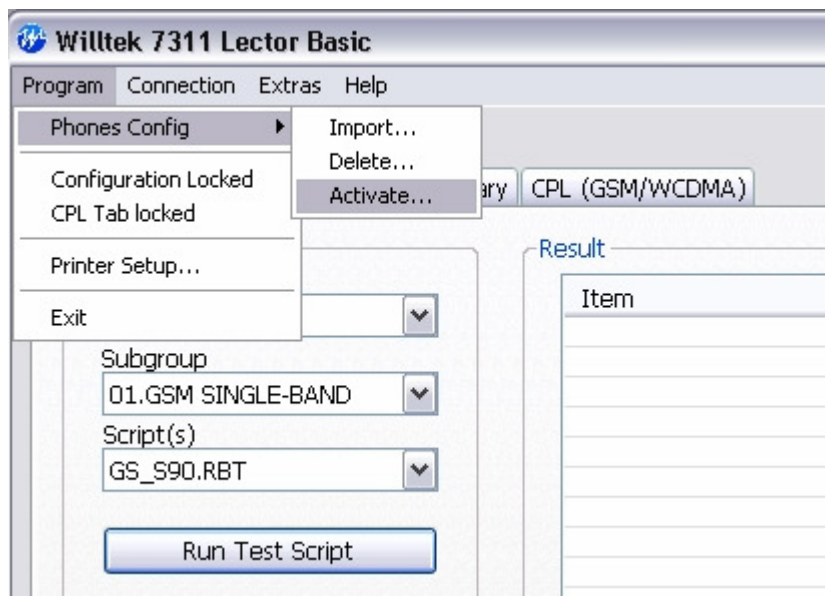


Afterwards the new group will be selectable with its subgroups and scripts in the Running tab

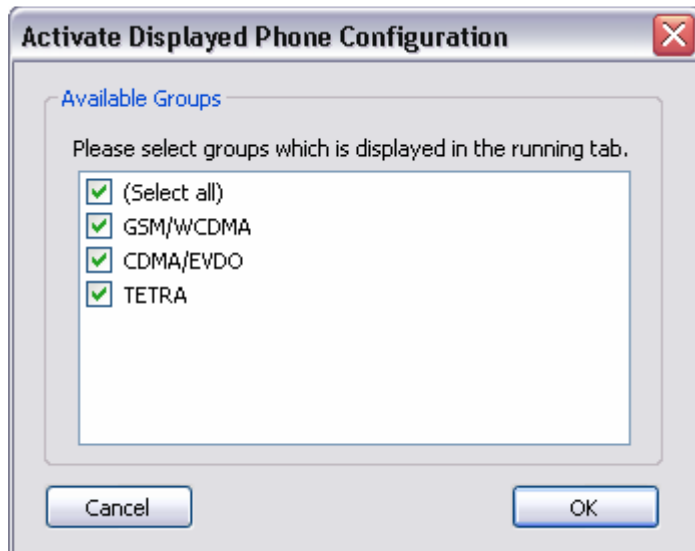
5 Activating / Deactivating existing packages

Start the Lector and select the following menu item:

Program >> Phones Config. >> Activate



Enable the check boxes of the groups which should be available and press the “OK” button:

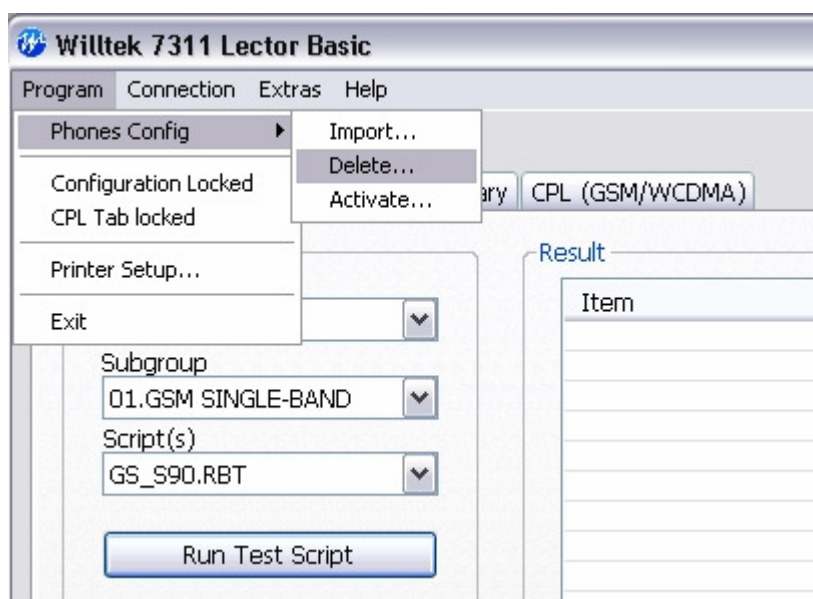


The disabled groups are no longer selectable in the Lector, but they are not deleted. To activate them again repeat the procedure by enabling the appropriate checkboxes.

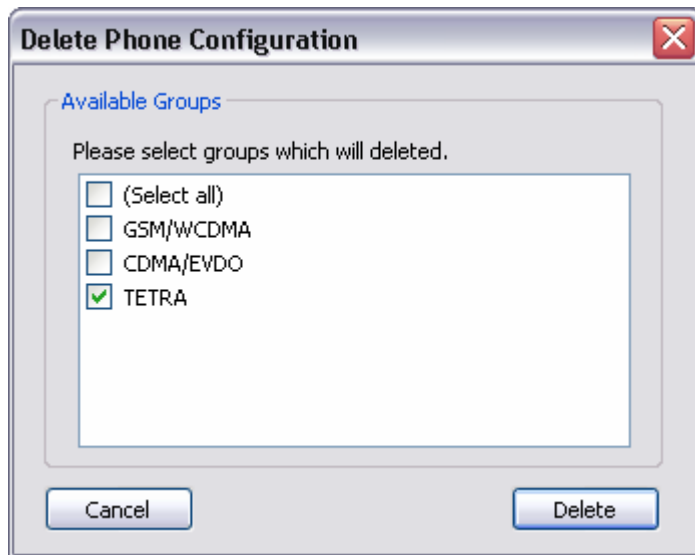
6 Deleting existing packages

Start the Lector and select the following menu item:

Program >> Phones Config. >> Delete



Enable the check boxes of the groups which should be deleted and press the “Delete” button:



The deleted groups are no longer selectable because they are completely removed from the Lector selection boxes. It is not possible to activate them again but the script and limit files are still available in the installation folder.